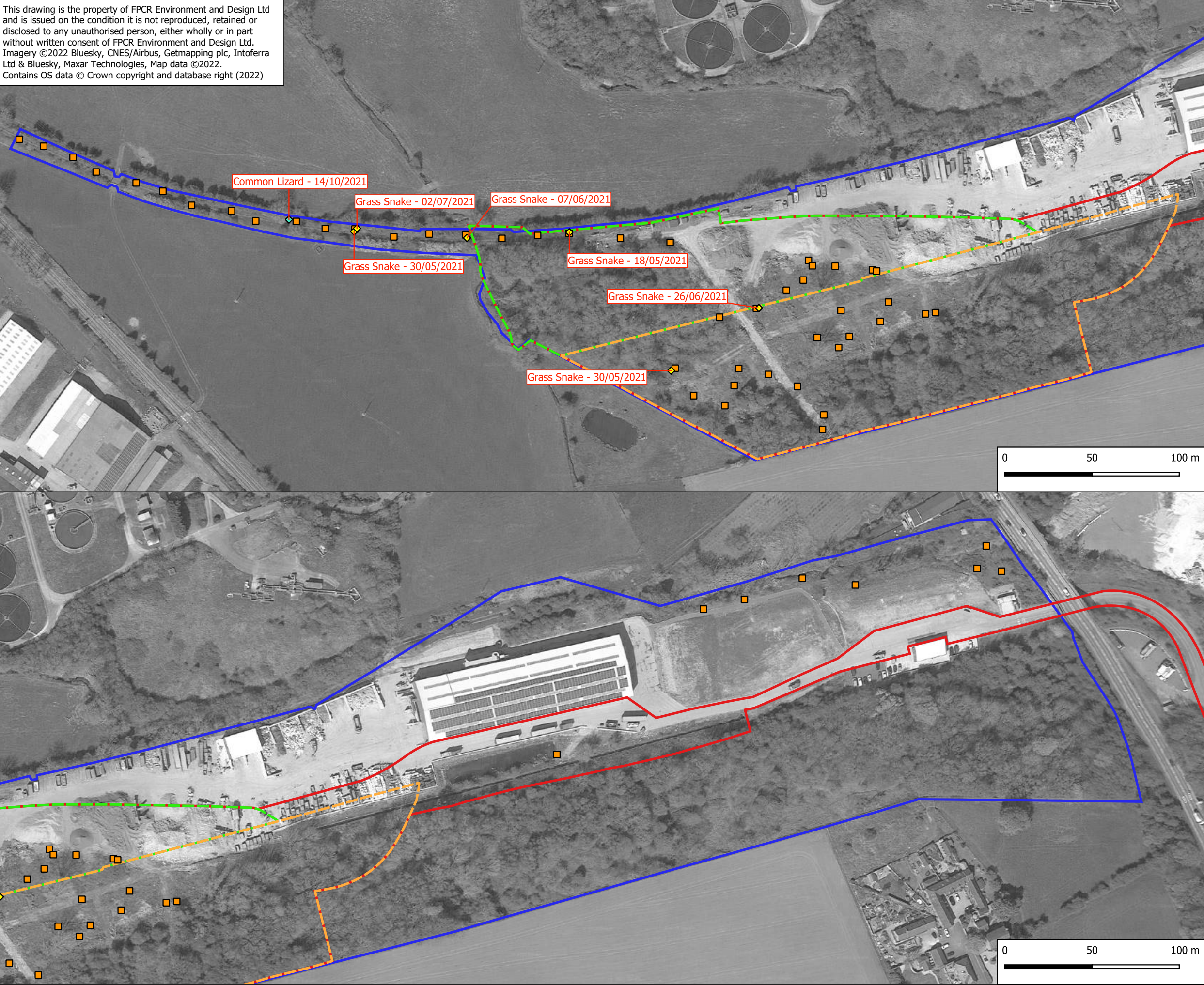


This drawing is the property of FPCR Environment and Design Ltd and is issued on the condition it is not reproduced, retained or disclosed to any unauthorised person, either wholly or in part without written consent of FPCR Environment and Design Ltd. Imagery ©2022 Bluesky, CNES/Airbus, Getmapping plc, Intoferra Ltd & Bluesky, Maxar Technologies, Map data ©2022. Contains OS data © Crown copyright and database right (2022)



Key

- SRRP Planning Application Red Line Boundary
- Ecology Survey Area
- Aggregate Recovery Facility (ARF) Boundary
- Energy Recovery Facility (ERF) Boundary

Reptile Sightings

- Common Lizard
- Grass Snake
- Tin Locations

B	29.09.22	Minor amendments	NJL/NJL
A	03.06.22	Added lizard record & boundary updates.	NJL/NJL
-	23.02.22	Initial draft	IJ/NJL
rev	date	comment	drm/chk



client  
**R&P Clean Power Limited**  
project  
**Swadlincote Resource Recovery Park (SRRP)**  
drawing title  
**REPTILE SURVEY RESULTS**



drawing / figure number  
**7233-ES-8.6-01**  
Date printed  
29/9/2022